

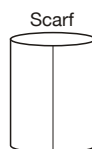
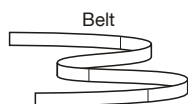
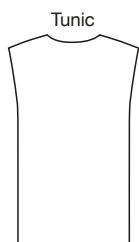
It's Fun  
It's Easy



It's a Scarf



It's a Hood



price **3683**

**FUN & EASY  
MISSES' TUNIC, BELT & SCARF**  
XS-S-M-L-XL

**Designed for stretch knits only.**

Suggested Fabrics: Interlock, jersey, matte jersey, single knit.

Loose fitting pull-over tunic had boat neckline and extended shoulders. Tunic has only shoulder seams and side seams, and the neckline, armholes, and bottom edge are unfinished. Tubular scarf can be worn as a neck scarf or hood. Long wrap belt has unfinished outer edges. Tunic, scarf, and belt are very easy to make and have special easy-to-follow instructions.

Size	XS	S	M	L	XL	
<b>Finished Length at Center Back</b>						
<b>Tunic</b>	33 1/2 (86)	34 1/2 (87)	35 (89)	36 (91)	36 1/2 (93)	" (cm)
<b>Material Required:</b> Fabric requirement allows for nap, one-way design or shading. Extra fabric may be needed to match design or for shrinkage.						
<b>Fabric 60" (152 cm) Wide</b>						
<b>Tunic</b>	1 1/8 (1.05)	1 1/8 (1.05)	1 1/8 (1.05)	2 1/4 (2.10)	2 1/4 (2.10)	yd (m)
<b>Belt – One Size</b>	7/8 yd (0.80 m)					
<b>Scarf – One Size</b>	1 yd (0.95 m)					
<b>Notions:</b> Thread.						

ESPECIALLY DESIGNED FOR THE BEGINNER SEWER!