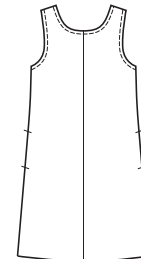
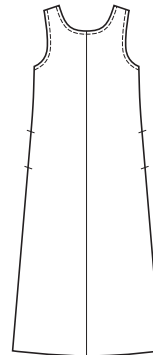




View A Back

View B Back



price **3871**

MISSES' DRESSES
XS-S-M-L-XL

Designed for lightweight woven fabrics.

Suggested Fabrics: Cotton, cotton types, linen, challis, rayon & blends, silk & silk types.

Pull-over A-line dresses have scoop neckline and pockets in side seams. Neckline and armholes are finished with bias cut bindings. Pattern includes 1/4" (6 mm) seam allowances.

Size	XS	S	M	L	XL	
Finished Length from Natural Waist	View A 32" (81 cm) — All Sizes		View B 19" (48 cm) — All Sizes			
Material Required: Fabric requirement allows for nap, one-way design or shading. Extra fabric may be needed to match design or for shrinkage.						
Fabric 58" (148 cm) Wide						
View A	1 7/8 (1.75)	2 3/8 (2.20)	2 3/8 (2.20)	2 1/2 (2.30)	2 3/4 (2.55)	yd (m)
View B	1 1/2 (1.40)	1 5/8 (1.50)	1 5/8 (1.50)	2 (1.85)	2 (1.85)	yd (m)
Fabric 44" (112 cm) Wide						
View A	3 (2.75)	3 (2.75)	3 1/8 (2.85)	3 1/4 (3.00)	3 3/8 (3.10)	yd (m)
View B	2 (1.85)	2 1/8 (1.95)	2 1/4 (2.10)	2 1/2 (2.30)	2 5/8 (2.40)	yd (m)

Notions: Thread.