



Designed for lightweight woven fabrics.

Suggested Fabrics: Cotton, cotton types, calicos, chambray, linen.

Pull-over A-line dresses have center back zipper, and armholes and neckline are finished with facings. View B has two contrast ruffles at bottom edge and upper ruffle has narrow header and ribbon trim with bow.

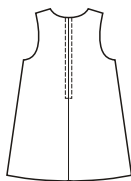
Pattern includes 5/8" (1.5 cm) seam allowances.

price **3862**

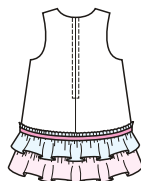
**GIRLS' A-LINE DRESSES**

XS(4-5) - S(6) - M(7-8) - L(10) - XL(12-14)

View A Back



View B Back



- Fabric
- Contrast I
- Contrast II



Size	XS	S	M	L	XL	
<b>Finished Length at Center Back</b>						
View A & B	21 (53)	23 (58)	25 (63)	27 (69)	29 1/2 (75)	" (cm)
<b>Material Required:</b> Fabric requirement allows for nap, one-way design or shading. Extra fabric may be needed to match design or for shrinkage.						
<b>Fabric 60" (152 cm) Wide</b>						
View A	1 (0.95)	1 1/8 (1.05)	1 1/8 (1.05)	1 1/4 (1.15)	1 1/4 (1.15)	yd (m)
View B Fabric	7/8 (0.80)	7/8 (0.80)	1 (0.95)	1 (0.95)	1 1/8 (1.05)	yd (m)
View B Contrast I	1/4 (0.25)	1/2 (0.50)	1/2 (0.50)	1/2 (0.50)	1/2 (0.50)	yd (m)
View B Contrast II	1/2 (0.50)	1/2 (0.50)	1/2 (0.50)	5/8 (0.60)	5/8 (0.60)	yd (m)
<b>Fabric 45" (115 cm) Wide</b>						
View A	1 (0.95)	1 1/8 (1.05)	1 1/8 (1.05)	1 1/2 (1.40)	1 3/4 (1.60)	yd (m)
View B Fabric	7/8 (0.80)	1 (0.95)	1 (0.95)	1 1/8 (1.05)	1 3/8 (1.30)	yd (m)
View B Contrast I	1/2 (0.50)	1/2 (0.50)	1/2 (0.50)	1/2 (0.50)	1/2 (0.50)	yd (m)
View B Contrast II	1/2 (0.50)	1/2 (0.50)	1/2 (0.50)	5/8 (0.60)	5/8 (0.60)	yd (m)
<b>Notions:</b> Thread, one zipper—9" (22 cm) for XS, 12" (30 cm) for S-M, 14" (35 cm) for L, 16" (40 cm) for XL. <b>View B:</b> 1 3/4 yd (1.60 m) of 3/8" (1 cm) wide ribbon.						